



PRESENTS



*It's a
Wonderful
Life*

*a live radio play by
Joe Landry*

DECEMBER 1-18, 2022

ISLAND CITY STAGE, WILTON MANORS

“Strange, isn't it? Each man's life touches so many other lives. And when he isn't around he leaves an awful hole, doesn't he?”

CLARENCE

IT'S A WONDERFUL LIFE (1946)





Funding for this project is provided in part by the Broward County Board of County Commissioners as recommended by the Broward Cultural Council.

browardarts.org



New City Players is supported by
Pompano Beach Arts

pompanobeacharts.org



Presents at
ISLAND CITY STAGE

Marcos Fuentes, Marlo Rodriguez, Carlos Alayeto,
Caroline Dopson & Noah Levine in

It's a Wonderful Life

a live radio play by JOE LANDRY

Director..... Timothy Mark Davis
Production Manager/Asst. Director..... Elizabeth Price
Stage Manager..... Brittany Blouin
Assistant Stage Manager..... Amanda Gomes
Scenic & Costume Designer..... Casey Sacco
Scenic & Costume Designer..... Arlette Del Toro
Lighting Designer..... Desiraé Merritt
Sound & Foley Designer..... Tyler Johnson Grimes
Asst. Dir./Asst. Lighting Designer..... Denzel McCausland
Scenic Painter..... Kathe O'Donnely
House Manager..... Megan DeGraaf
Box Office Manager..... Tyler Johnson Grimes
Dramaturg..... Ilana Jael

A Note from the Director

It's fascinating to read Frank Capra, director of the film *It's A Wonderful Life*, talk about how for him the film was about "exalting the worth of the individual" and "championing man-pleading his case". While the exaltation of the individual is certainly present in this story, it's not actually the element that puts a lump in my throat and a tear in my eye. It's George Bailey's community rallying around him in his time of need. It's the plight of an individual being alleviated by his community. It's the paradoxical beauty of the one in and among the many. Spoiler alert by the way (hopefully you've seen the film).

Capra sees his film as a cry for the dignity of the individual... but where is that individual without their community? Clarence sums it up "No man is a failure who has friends." Here's the truth: our individual choices add to and/or subtract from the lives of others. At all moments we are either contributing to or detracting from our neighbor. Perhaps if we build communities of individuals whose choices are adding something kind or good or sacrificial or meaningful

to each other's lives, that community will take on those very traits. There is a wonderful exploration of the personal and the public; the individual and the communal in this story.

I hope you walk away knowing that your life has worth, that you have added to other's lives, that others have added to your life, and that those truths make life worth living. There is much to be grateful for and gratitude is medicine for the cynic's mind. Open your heart to the silly and the sentimental during this show. Let the joy overtake you. You'll be glad you did.



A handwritten signature in black ink, appearing to read 'Tim Davis', written in a cursive style.

Timothy Mark Davis
Director/Producing Artistic Dir.

Cast *(in order of appearance)*

Freddie Filmore/Potter & Others..... Carlos Alayeto
Jake Laurents/George Bailey..... Marcos Fuentes
Sally Applewhite/Mary Hatch..... Marlo Rodriguez
Lana Sherwood/Josephine & Others..... Caroline Dopson
Harry "Jazzbo" Heywood/Clarence & Others..... Noah Levine

SETTING

1949, at the Fort
Lauderdale Radio
Station: WNCN

There will be no intermission.



We'd like to acknowledge that this production is taking place on the occupied indigenous lands of the Seminole, Taino, and Tequesta peoples. It's important that we acknowledge the history and ongoing colonization of where we are sitting right now in South Florida and in our country. It's also important to acknowledge our own place in the story of colonization.

It's a Wonderful Life is presented by special arrangement with Playscripts, Inc. Show artwork and playbill by Ryan Arnst.



Welcome to The Build

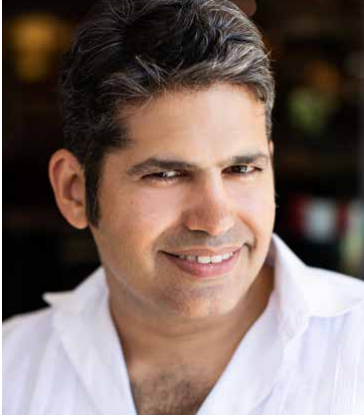
Did you know our dramaturg, Ilana Jael, has been blogging through this production?

Check out some of her recent articles at

newcityplayers.org/thebuild



Cast *(in order of appearance)*



Carlos Alayeto

*as Freddie Filmore/Potter
& Others*

Carlos is thrilled to be joining the cast of *It's a Wonderful Life* and be part of a New City Players production.

Born and raised in Miami,

Carlos has been privileged to work on stages across the region like Theatre Lab, Thinking Cap Theatre, Actors' Playhouse, Alliance Theatre Lab, City Theatre, and Miami New Drama. He's also been a professional voice actor and Arts for Learning Teaching Artist for over 15 years.

Cast *(in order of appearance)*



Marcos Fuentes

as Jake Laurents/George Bailey

Marcos is a screen and stage actor born in Miami, Florida, of Honduran and Argentinian descent. From a young age, Marcos discovered

his passion by being enthralled in South Florida's theater scene through exposure of both his parents' careers as performers. He has been training as an actor since middle school and continues to carry the determination to hone his craft. Marcos recently attained his BFA from New World School of the Arts College with a focus in Acting. His most recent work includes the audio drama *Where or When*, a time traveling romance and *Before Dawn*, a post apocalyptic short film. Marcos is thrilled to be working on such a timeless story with an incredible cast. His many thanks go out to the cast and crew of NCP, his family, and friends.

Cast *(in order of appearance)*



Marlo Rodriguez *as Sally Applewhite/Mary Hatch*

A South Florida director and actor, Marlo Rodriguez holds Bachelor of Fine Arts in Theatre Performance from Florida Atlantic University.

She is extremely grateful to work alongside such a creative team for New City Player's production of *It's a Wonderful Life* and hopes that this show sparks abundant joy for audiences. Her recent credits include *Lungs* (New City Players), *Luna Gale* (Boca Stage), *Merchants of Venice* (Grace Arts FL), and *Miami Bus Stop Stories* (Juggerknot Theatre). Marlo is a recipient of the 2022 Silver Palm Award for Outstanding Direction for her contribution as assistant director for *Once On This Island* (Slow Burn Theatre Company). She will have her Directorial debut with New City Player's production of *Cry Old Kingdom* in April of 2023.

Cast *(in order of appearance)*



Caroline Dopson

*as Lana Sherwood/
Josephine & Others*

Caroline is an educator, actress, and makeup artist located in South Florida.

While she is native to Louisiana, she moved to

Florida to pursue her MFA in Theatre Performance at FAU where she currently teaches. Some of her favorite roles include as follows: Marianne (Constellations), Mrs. Givings (In the Next Room), Sydney (The Altruists), Joan (Fun Home), and Karen (The Children's Hour). She would like to thank the cast, crew, her fiancé, and her cat for making the world a better place <3

Learn more about her work at
carolinedopson.com

Cast *(in order of appearance)*



Noah Levine

*as Harry "Jazzbo" Heywood/
Clarence & Others*

Noah is happy to finally be making his NCP debut, and is thankful to Tim, Elizabeth, and the rest of the stellar NCP team for

the privilege! Other regional credits include: Actor's Playhouse, City Theatre, Delray Beach Playhouse, Island City Stage, Kutumba, Mad Cat (company member), Miami Shakespeare, NY Fringe Festival, Slow Burn, StoryMakers, Theatre Lab, Thinking Cap (company member), and West Boca Theatre Company. Speaking of which, feel free to check him out next month in WBTC's production of Joshua Harmon's *Admissions*. He received his BA in Theatre Performance from Florida Atlantic University in 2004. He lives in Deerfield with his lovely wife Cally, award-winning elementary educator and massage therapist (yes, for both), and their cute little 4-year-old son, Miles.

A Wonderful Season To Make Connections

Believe it or not, I'd never actually seen *It's a Wonderful Life* in its entirety before I found myself getting enlisted for this project. But since beginning my research into this play and into the classic film that inspired it, I've found myself increasingly fascinated by its peculiar road to notoriety, as well as by the fact that it tells a darker and more nuanced story than many of us remember.

Many of the issues addressed in *It's a Wonderful Life*, from discrimination against immigrants to the large-scale impact of socioeconomic inequality, are still as unfortunately relevant today as they were when the film premiered in 1946. This includes the one it addresses both most famously and most directly: the issue of suicide. Unfortunately, suicide remains a serious public health issue, and one that remains disturbingly prevalent in present day USA. As I discovered while researching one of the blog posts I wrote related to the production, 47,646 Americans committed suicide in the year 2021, and 234 suicide deaths took place last year in Broward County alone.

Though this may sound bleak, these statistics do have a flip side: that the vast majority of suicide deaths are thought to be preventable. And, while social isolation is one of the biggest risk factors for suicidal ideation, one of the greatest protective factors against it is in fact social connectedness, which is much the same thing as I found to be true regarding addiction while investigating it in conjunction with last year's New City Players'

production of *Water By The Spoonful*.

However, it also seems as if ours is becoming a world in which making meaningful connections has become more and more difficult, as attested to by the hypothesized existence of an American “loneliness epidemic,” that experts suggest the pandemic only exacerbated. As political divisions magnify interpersonal ones and massive corporate conglomerates displace small family firms, the typical American town has begun to look less like Bedford Falls than like Pottersville; places in which a lack of strong social ties leads to a replacing of morality with debauchery, and which run by an every man for himself ethos that seems to be eating many of us up inside.

Yet while the larger scale causes of this loneliness epidemic are out of most of our hands, most of us do have the power to combat it in ways that may seem small but that can have a profound impact on the people we share our lives with. Perhaps no story illustrates the immensity of that impact better than does *It's a Wonderful Life*; so, if you take nothing else away from this radio play reimagining of the tale, I hope you can take from it a reminder of the importance of nurturing your connections with the people whom you most care about—or a willingness to be open to making new ones, especially with those around you who seem most in need of a helping hand.



Ilana Jael
Dramaturg

THEATRE LAB



THE PROFESSIONAL RESIDENT COMPANY
OF FLORIDA ATLANTIC UNIVERSITY

Dorothy's Dictionary

by E.M. Lewis

World Premiere
November 19-December 11

For tickets & info visit
www.fauevents.com or
call 561-297-6124



TAX SEASON IS HERE, ARE YOU READY?



INTEGRITY
ACCOUNTING ADVISORS

Contact us today!

(954) 533-4197

info@integrityaccountingadvisors.com

integrityaccountingadvisors.com

1770 Northwest 64th Street, Ste. 300
Fort Lauderdale, FL 33309

Community Partnerships

The following individuals and organizations contributed to our forum on Mental Health and the Holidays on November 16. Please explore their work of these organizations and consider supporting them.

Rick Wolfer, United Way of Broward
unitedwaybroward.org

Shay Palmer, Mission Yoga
missionyogafl.com

Dr. Andre Caruso
dacpacs.com

Cyth & Co.
cythco.com

Do you know about 211?

New City Players supports 211, a free and confidential service that helps people across North America find the local resources they need 24/7.

211 is the most comprehensive source of information about local resources and services in the country. It's powered by people: thousands of caring, local experts are available to help, 24/7. Calls to 211 are confidential and can be anonymous.

The 211 network in the United States responds to more than **20 million requests** for help every



year. Most calls, web chats, and text messages are from people looking for help meeting basic needs like housing, food, transportation, and health care. 211 can be accessed by phone or computer, at **211.org**. A toll-free call to 211 connects you to a community resource specialist in your area who can put you in touch with local organizations that provide critical services. You'll find information about:

- Supplemental food and nutrition programs
- Shelter and housing options and utilities assistance
- Emergency information and disaster relief
- Employment and education opportunities

- Services for veterans
- Health care, vaccination and health epidemic information
- Addiction prevention and rehabilitation programs
- Reentry help for ex-offenders
- Support groups for individuals with mental illnesses or special needs
- A safe, confidential path out of physical and/or emotional
- Domestic abuse

Across the U.S. and Canada, 211 has made a difference during COVID-19. Whether it's providing reliable information about the pandemic, testing or vaccination sites, or helping people stay in their homes, put food on the table and pay bills – 211 has been a lifesaver for millions over the last 18 months. The 211 network made 27.8 million connections to critical services and help last year, up nearly 100% from 2019. And call specialists have fielded a 150% increase in connections to food programs. All of that is an indicator of how vital a strong 211 is to strong, resilient communities.

Go to [211.org](https://www.211.org)

Production Staff

Director.....	Timothy Mark Davis
Production Manager/Asst. Director.....	Elizabeth Price
Stage Manager.....	Brittany Blouin
Assistant Stage Manager.....	Amanda Gomes
Scenic & Costume Designer.....	Casey Sacco
Scenic & Costume Designer.....	Arlette Del Toro
Lighting Designer.....	Desiraé Merritt
Sound & Foley Designer.....	Tyler Johnson Grimes
Asst. Dir./Asst. Lighting Designer.....	Denzel McCausland
Scenic Painter.....	Kathe O'Donnely
House Manager.....	Megan DeGraaf
Box Office Manager.....	Tyler Johnson Grimes
Dramaturg.....	Ilana Jael
Graphic Designer & Photographer.....	Ryan Arnst
Videographer.....	Manny Zaldivar

A very special ***"Thank You!"*** to the following individuals and organizations whose generous support has made this production of *It's a Wonderful Life* possible!

Island City Stage, Integrity Accounting Advisors, NSU University School, Florida Atlantic University, April K. Soroko, Patty Clemson, Michael Burch, Mercedes del Toro, Daniel Eilola at Lake Worth Playhouse, Art Tijerina at Starbucks, Trader Joe's, Aaron Ivey, Don Grimes, Theatre Lab at FAU, Zoetic Stage, Slow Burn Theatre, Plays of Wilton, City Theatre, MNM Theatre Company, Palm Beach Dramaworks

Creative Team



Timothy Mark Davis

Director, Producer

Tim is a theatre producer, director, and actor. He is a founder and Producing Artistic Director of New City Players and has produced over fifteen productions

with the company since 2014 and directed four including *Rabbit Hole*, *The Glass Menagerie*, *Proof*, and *Clybourne Park*. With New City Players Tim has spearheaded the vision for works produced, community engagement, fundraising, marketing, artist hiring, and the building of an ensemble. He holds an M.A. in Theatre Studies, received the 2017 Silver Palm Award for Outstanding New Theatre Company, the 2019 Remy Service Award for service to the South Florida Theatre League, and the 2020 Carbonell Award for Best Actor for his work in New City Players' production of *Falling*.

Learn more about his theatre and film work at timothymarkdavis.com

Creative Team



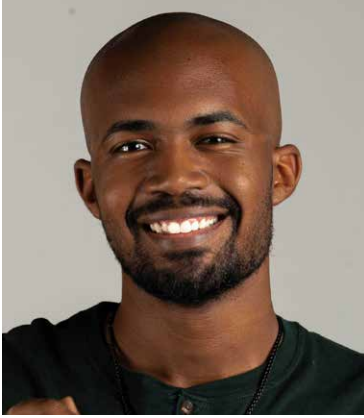
Elizabeth Price

Production Manager, Asst. Director, Producer

Elizabeth is a stage, screen, and voice actor, director, and producer based in South Florida. She received her MFA in Acting from Florida

Atlantic University where she taught acting for the last nine years. She now serves as the Associate Artistic Director for New City Players. South Florida stage acting credits include: *Rx*; *Villainous Company*; *An Accident*; *Reborn* (Boca Stage), *Little Montgomery*; *Falling*; *Twelfth Night* (New City Players), *This Random World* (Theatre Lab), *Son* (Island City Stage), *Crooked*; *Dance Nation*; *The Importance of Being Earnest* (Thinking Cap), *Standing on Ceremony*; *Island Shorts* (City Theatre), *The How and the Why* (Arts Garage), *Reservoir Dolls*; *The Normal Heart* (Outre). She's also acted and directed in Los Angeles, Atlanta, Dallas, Austin, New Orleans, and New Mexico, and has received two Silver Palm Awards, a Big Easy Award, and three Carbonell Award nominations for her acting and directing.

Creative Team



Denzel McCausland

Asst. Director, Asst. Lighting Designer

Denzel is an actor born and raised in Miami. He is a Florida Atlantic University graduate with his Bachelor's in Theatre. His most

recent credits include his portrayal of "M" in *Lungs*, produced by New City Players, Shepard Mallory from Boca Stage's production of *Ben Butler*, Bass in the production of *Merchants of Venice* performed at the Victory Black Box Theatre and Lincoln in the Main Street Players production of *Topdog/Underdog*. Denzel is extremely excited for the opportunity to be able to work with and learn from the New City Players for this production.

Creative Team



Brittany Blouin

Stage Manager

Brittany is a local South Florida actor and freelance stage manager. She has recently graduated with her B.F.A. from Florida Atlantic University, and has

recently finished stage managing a production of *Young Frankenstein*. She is thrilled to be working with New City Players on this amazing production of *It's a Wonderful Life*.

Creative Team



Amanda Gomes

Asst. Stage Manager

Amanda is honored to work with NCP for the first time as the ASM for *It's a Wonderful Life!* They are a jack of many trades working in several areas of theatre from

singing & acting to directing, writing, stage managing, wardrobe, and theatrical makeup. They'd like to thank the cast and crew for their support and holiday spirit!

Keep up with them on all social media platforms

@mandagomeswho

Creative Team



Casey Sacco

Scenic & Costume Designer

Casey is a local actor and resident costume designer for New City Players.

Credits include: Wardrobe Supervisor for *School of Rock* (First National Tour),

Costume Designer for South Florida plays: *Lungs*, *Water by the Spoonful* (New City Players), *Armature*, *One in Two* (Island City Stage), *Carrie: The Musical* (Oxbridge Academy). You can see Casey's work coming up in *Rotterdam* (Island City Stage, Jan 2023).

Learn more about her work at
caseysacco.com

Creative Team



Arlette del Toro

Scenic & Costume Designer

Arlette is very excited to be a part of this wonderful production. She has previously worked professionally as an actor in DC, Seattle, and now Fort

Lauderdale. She has acted for several South Florida theaters, and most recently appeared as Odessa/Haikumom in NCP's production of *Water by the Spoonful* at Island City Stage.

Creative Team



Desiraé Merritt

Lighting Designer

Desiraé is a freelance lighting designer with a B.F.A. in theater technology and design from Florida Atlantic University. Desiraé's credits include *Lungs* and

Water by the Spoonful with New City Players as well as *Ben Butler* and *Luna Gale* with Boca Stage. Desiraé is a proud NCP ensemble member and this is her second season with the company. Desiraé would like to thank everyone at NCP for giving her the love and support needed to get her to this point, as well as her family and boyfriend for pushing Desiraé to be her best. Congratulations, cast and crew of *It's a Wonderful Life!* Happy holidays!

Find out what Desiraé is up to next on Instagram:

@desiraemerritt.LD

Creative Team



Tyler Johnson Grimes

Sound & Foley Designer

Tyler is a story-teller, game-maker, and educator who made his NCP debut with his short play *My First Time* at Lab Fest earlier this year.

Previously in South Florida,

he has sound designed productions of *Church & State* and *True West* (Main Street Players), as well as designed/directed/produced shows with several high schools in Broward and Palm Beach County. In New York, he was the Resident Playwright, Sound Designer, and Managing Director of Distilled Theatre Company, and he was the Co-founder of DTC Radio. Happy Holidays!

Creative Team



Kathe O'Donnely

Scenic Artist

Kathe O'Donnely is a freelance artist and designer based in St. Augustine, Florida. She has worked in children's theatre in her hometown of Houston,

costumed for The Playmakers and Bangkok Community Theatre while living in Thailand and was recently an arts administrator for St. Johns County. Once the owner of an aquatic production company, she costumed and created sets for mermaids, mariners, aqua-bots and cowboys at theme parks and fairs around the globe.

Creative Team



Ilana Jael

Dramaturg

Ilana earned her MFA in Creative Nonfiction from Sarah Lawrence College and a BA in Writing and Psychology from Florida

Atlantic University's Wilkes Honors College. Her short plays and one-acts have been produced in-person and virtually in the Florida area by companies New City Players, Theatre Lab, Bob Carter's Actor's Workshop and Repertory Company, and Femuscripts, as well as by student troupes Theatre In The Raw and Alpha Psi Omega at Florida Atlantic University. She is also a current company and board member with New City Players, and recently served as dramaturg for their spring production of *Water By the Spoonful*. Additionally, she has served as lead critic and a frequent feature writer for the virtual publication South Florida Theater Magazine since the site's inception in May of 2021.





UNION KITCHEN & BAR

SIP, SIP, HOORAY!

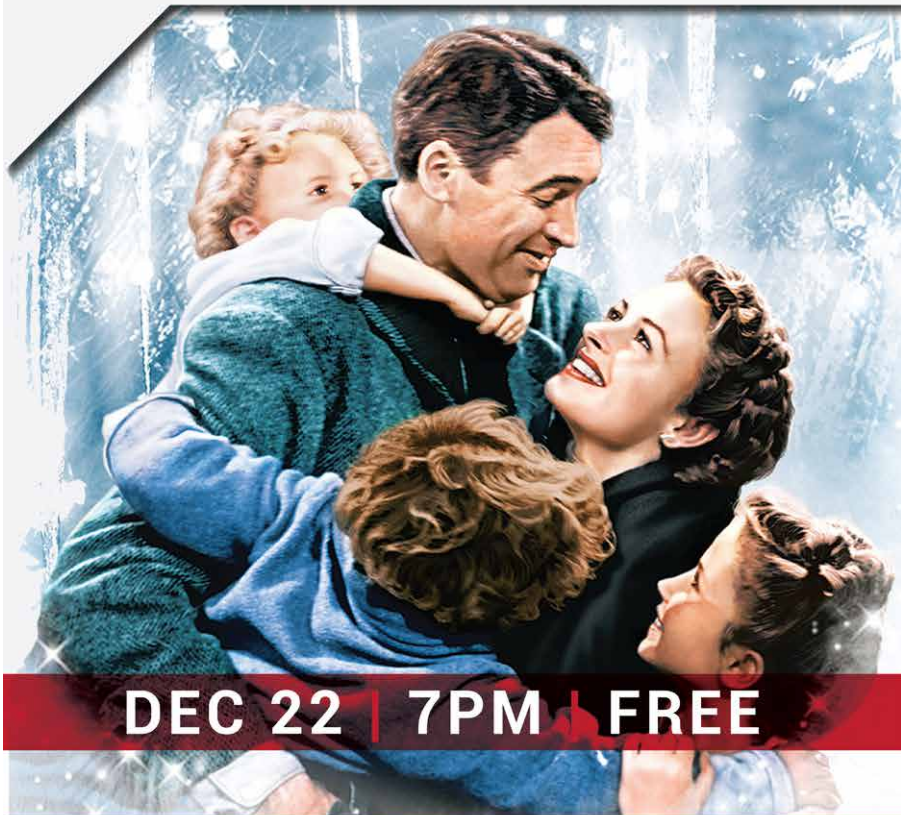
Follow us on social media and sign up for our e-newsletter to learn about our monthly wine dinners & tastings, in addition to our **\$7 till 7 PM Happy Hour** on Tuesdays-Sundays and **Wine Down Tuesdays** (50% off all wine bottles).

WWW.UNIONKB.COM

 UNION_KB  UNIONKB

It's a Wonderful Life

Join us for a screening the 1946 American Christmas fantasy drama classic "It's a Wonderful Life".



DEC 22 | 7PM | FREE



pompano beach arts



Mark your calendar!



April 13-30 | Island City Stage

Haiti, 1964. Francois "Papa Doc" Duvalier's repressive regime has forced once-successful artist Edwin into hiding, turning him into a walking ghost. When Edwin finds a young man building a boat to escape to America, and persuades him to pose for a painting, he finally feels alive again. But with cries for revolution resounding through the nation and the regime's death squads on the prowl, no one's life is safe. Sometimes trying to dream and survive forces impossible choices.

newcityplayers.org/season



Photographer
Videographer
Graphic designer
Drone operator

Based in South Florida & Chicago
Open to remote or travel opportunities

ryanarnst.com

GET THE BEST WINGS
IN BROWARD



Open Tuesday–
Sunday

1538 E Commercial Blvd,
Oakland Park, FL 33334

perrywings.com

About New City Players

THE COMPANY

Producing Artistic Director.....	Timothy Mark Davis
Associate Artistic Director.....	Elizabeth Price
Business Manager.....	Megan DeGraaf
Community Engagement Manager.....	Ernesto Gonzalez
Marketing Manager.....	Alex Joyel
Original Content Manager.....	Casey Sacco
Company Manager.....	Krystal Valdes
Box Office Manager.....	Tyler Johnson Grimes
Media Specialist.....	Ryan Arnst

THE ENSEMBLE

Rachel Smoker Cox, Timothy Mark Davis*, Arlette Del Toro, Michael Gioia, Ernesto Gonzalez*, Ilana Jael, Alex Joyel, Denzel McCausland, Desiraé Merritt, Abby Nigro, Daryl Patrice, Harold Petion, Elizabeth Price*, Jocelyn Richardson, Marlo Rodriguez, Casey Sacco*, Krystal Millie Valdes*

**Member of the Artistic & Programming Committee*

THE BOARD

Tim Davis (President), Megan DeGraaf (Secretary), Ernesto Gonzalez, Ilana Jael, Alex Joyel (Chair), Tracy Manning



Make the leap.

Professional video for promos & events

stonecirclemedia.co

**COFFEE. COCKTAILS.
COMMUNITY.**



CYTH & Co.

New City Players' community engagement programming is sponsored by Cyth & Co.

cythco.com

Thanks to Our Donors *(Updated 11/29/22)*

PLAYER (\$5-\$99)

Ellen Albert, Manuel Alvarez, Andie Arthur, Erica & Zach Dade, Alicia Farrington, Michael Ferreiro, Matt Stabile & Niki Fridh, Michael Gioia, Tyler & Kimmi Johnson Grimes, Ernesto Gonzalez, Noah Levine, Carlos Londono, Margery Lower, Nick Lyon, Dayana Morales, Janet Nestler, David O'Connor, Amy Pasquantonio, Jazz Patterson, Laura Plyler, Gayle Powers, Melissa Ramkissoon, Sharon Raye, Haley Rossi, Casey Sacco, Katie Sacco, Mirhonda Studevart, Luisa Suarez, Terri Temkin, Gale Goldstein Tucker, Seth Turnoff, Ahnee & Joe Voelker, Erin Voelker, Leb Williams

CAMEO PLAYER (\$100-\$499)

Noel Barry, Bonnie Berg, Marj O'Neill-Butler, Barbara Buzzi, Cheryl Bycheck, Michael Carrigan, Kaitlyn Day, Megan DeGraaf, Joy & Tommy Delia, Jonelle Rivas Gibson, M. Chad Gordon, Teresa Hawkins, Alex Joyel, Denise & Tony Joyel, Ryan Kulkarni, Bruno, Paes Leme, Harold Martin, Denzel McCausland, Mike Moskal, Jim & Ann Mullen, Kath O'Donnelly, Alison Page, Elizabeth Pimentel, Laura Sacco & Chris Richardson, Nick Richberg, Robin Rothman, Susan Rothman, Teresa (Margot) Rueda, Heather Sacco, Kerry Sacco, Sean Sacco, Henny & Berge Santo, Zulia Schooley, Jessica Schulte, Cecilia Silva, Thomas Severino, Arlette Del Toro, Mercedes Del Toro, Merci Del Toro, Sylvia Trein, Jinon Velazquez, Jean Warner, Nancy Winokoor, Patty Wolfhagen

Thanks to Our Donors *(Updated 11/29/22)*

FEATURED PLAYER (\$500-\$999)

Rachel Smoker & Kenny Cox, Zoot Byrne, Margaret & Ed McGrath, Elizabeth Price, Timothy Proctor, Will Turnage, Bill Swain

SUPPORTING PLAYER (\$1,000-\$4,999)

Mark & Karen Davis, Jan & Kelly Lyon, Kay Stevens, Tracy & Mike Manning, Stone Circle Media, Jonathan R. Povilonis, Brad & Laine Schmidt, David Christopher & David Umbach

LEADING PLAYER (\$5,000-\$9,999)

Pompano Beach Cultural Center & Pompano Beach Arts

STAR PLAYER (\$10,000-\$20,000)

Funding Arts Broward

PRODUCING PLAYER (\$20,000+)

Broward County Cultural Division

Support NCP today!

New City Players accounts for over 60% of its programming costs through generous giving. Your support is essential in fulfilling our vision of seeing the people in our community become more thoughtful and empathetic.

BECOME A FRONT ROW MEMBER

Visit newcityplayers.org/frontrow to learn more.

BECOME A SPONSOR

Contact Tim Davis at tim@newcityplayers.org to learn more.

MAKE A DONATION

Online: newcityplayers.org/give

Paypal: ncp@newcityplayers.org

Venmo: [@newcityplayers](https://venmo.com/newcityplayers)

Or by choosing to support NCP on [smile.amazon.com!](https://smile.amazon.com)

BE AN ADVOCATE

Forward emails, share social media posts, write your own posts on social media with pictures about your experience, tell someone about the show, or pass out an info card!

*New City Players is a 501(c)(3) not-for-profit organization.
Your donations are fully eligible for a tax deduction.*

Did you know?

New City Players is a 501(c)(3) non-profit, professional, ensemble theatre company based in Fort Lauderdale, Florida.

Our mission is to create community through transformative theatre.

Our vision is to help South Florida become a more empathetic and thoughtful community.

Help us reach our \$15,000 year end goal so we can continue creating transformative theatre experiences in our community.

**TAP HERE
TO GIVE**

NEWCITYPLAYERS.ORG

BOX OFFICE | 954.376.6114

